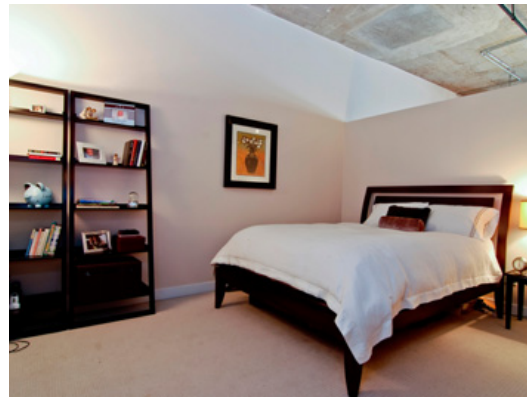


The huge master suite includes an enormous walk-in closet, and you'll have to travel far and wide to find a larger second bedroom in a city loft! A Washer and dryer is included for your convenience.

This popular LR Development building was built in 1916 - it was a paper company that produced paper and tissue, but during WWII it provided plastic helmet liners for the soldiers. It is managed today by Wolin-Levin; amenities include a doorman, bike room, exercise facilities, and roof deck with fantastic city views.

It's an ideal location — tucked near the end of a one way street yet moments from transportation arteries and the finest restaurants and entertainment in Chicago!



A convenient parking spot is available in the heated garage for \$ 35,000.

